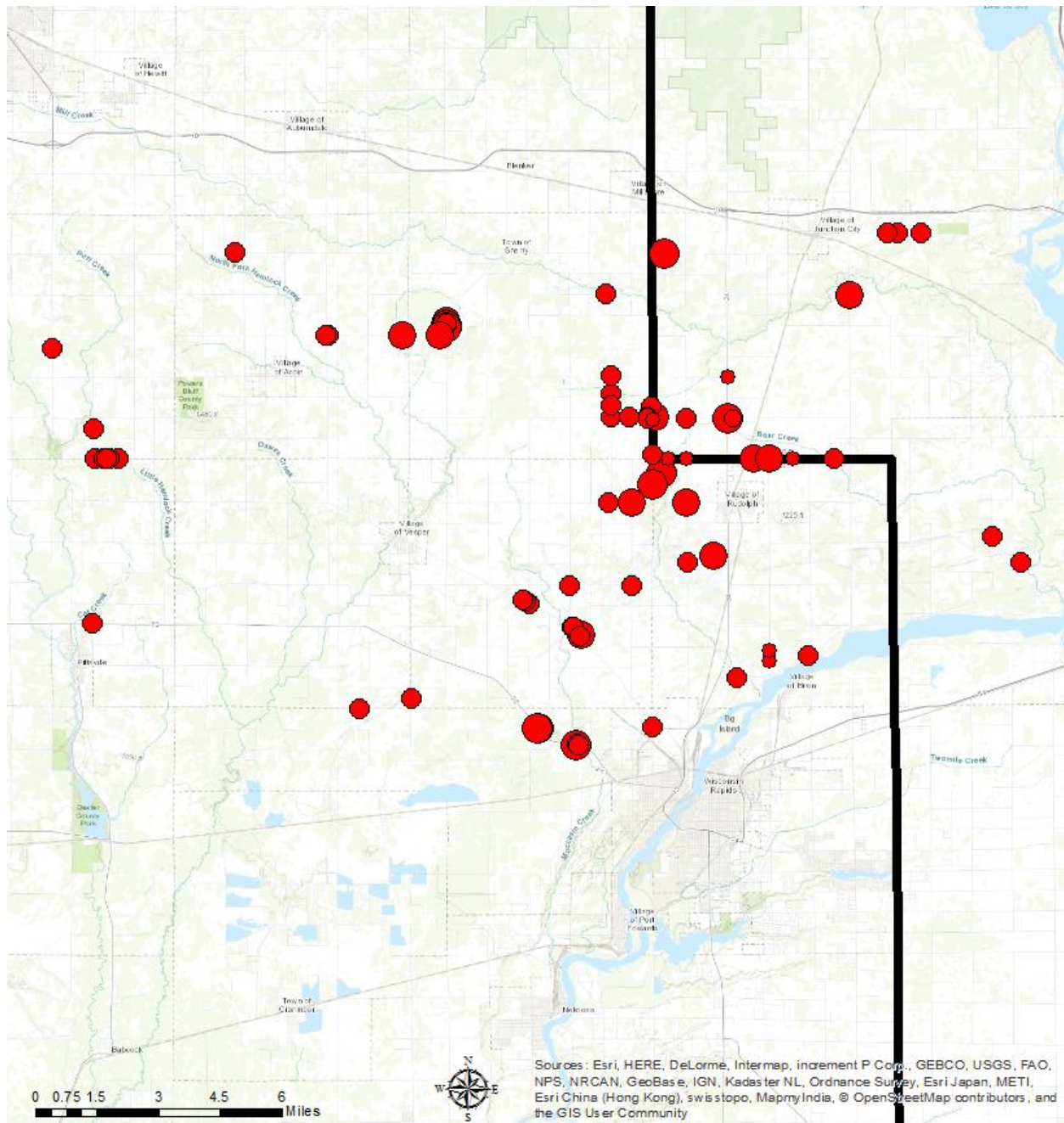




Wild Parsnip in Wood and Portage Counties



Mapping done in summer 2017

In March of 2017, the Wood County Board passed a resolution designating wild parsnip as a “noxious weed” within Wood County. Therefore we are providing simple information on the location, how to identify the plant, and how to control the plant in hopes that all that become aware of the plant have the tools to eradicate the plant.

Townships Affected

Wood County: Arpin, Cameron, Grand Rapids, Richfield, Rudolph, Seneca, Sherry, Sigel, and Wood
Portage County: Carson and Linwood.

Wild parsnip can be found on roadsides, fence rows, prairie restorations and poorly managed pastures. Most abundant on sites dominated by perennial grasses that are mowed once or twice annually. Seedlings are among the first plants to greenup in the spring. One of the dominant yellow-flowered weeds in July.

The plant forms a rosette of leaves arranged in a spiral fashion during the first year of growth and a large taproot. During the second year, it produces erect stems that grow 5 feet tall and terminate in umbrella-shaped clusters.



Control

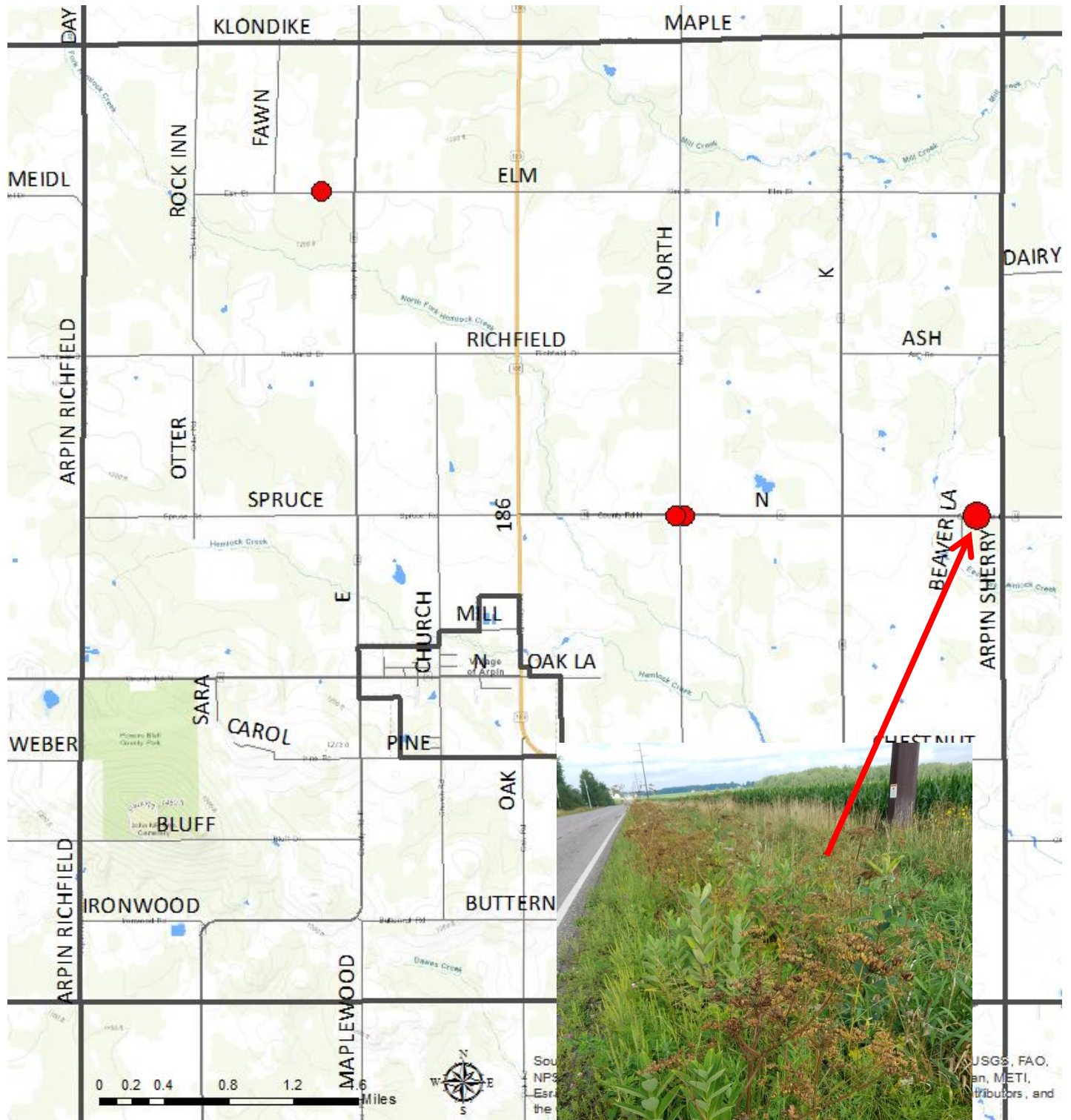
Mechanical: Cut root at an angle 1-2” below soil surface. Mowing can be effective if timed after the emergence of flower heads, but before seeds enlarge. Plants may resprout and still flower, but rarely produce viable seed. Mowing when there are mature seeds will spread seed. Repeat annually for 3-5 years.

Chemical: Spot treat rosettes with 2, 4-D, metsulfuron methyl, or glyphosate. Spot treat adult plants mid-May to mid-June with metsulfuron methyl plus a surfactant.

<p>2,4-D*</p> <p>Effectiveness in season: 90–100% Season after treatment: 70–90%</p> <p>Common name: Many</p> <p>Rate: broadcast: 0.95–1.9 lb a.e./A spot: For a 3.8 lb a.e./gal product: 1% (0.038 lb a.e./gal)</p> <p>Timing: Apply to rosettes in fall or spring, bolting, or flowering plants.</p>	<p>glyphosate*</p> <p>Effectiveness in season: 90–100% Season after treatment: 70–90%</p> <p>Common product name: Roundup</p> <p>Rate: broadcast: 0.5–1.0 lb a.e./A spot: For a 3 lb a.e./gal product: 1–2% (0.03–0.06 lb a.e./gal)</p> <p>Timing: Apply to rosettes in fall or spring, bolting, or flowering plants.</p>	<p>dicamba + 2,4-D*</p> <p>Effectiveness in season: 90–100% Season after treatment: 90–100%</p> <p>Common name: Weedmaster</p> <p>Rate: broadcast: 16–32 fl oz/A (dicamba: 0.14–0.27 lb a.e./A + 2,4-D: 0.18–0.36 lb a.e./A) spot: 0.8% (dicamba: 0.009 lb a.e./gal + 2,4-D: 0.011 lb a.e./gal)</p> <p>Timing: Apply to rosettes in fall or spring, bolting, or flowering plants.</p>	<p>metsulfuron*</p> <p>Effectiveness in season: 90–100% Season after treatment: 90–100%</p> <p>Common name: Escort</p> <p>Rate: broadcast: 0.3–1.0 oz/A (0.2–0.6 oz a.i./A) spot: 0.04 oz/gal (0.02 oz a.i./gal)</p> <p>Timing: Apply to rosettes in fall or spring, bolting, or flowering plants.</p>
---	--	--	---

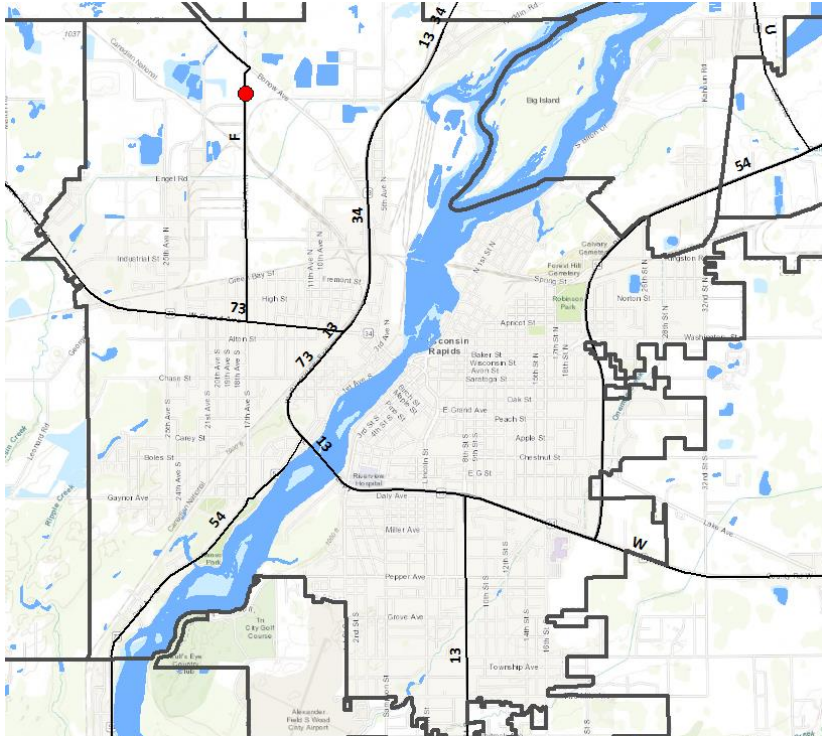
For more information, see <http://learningstore.uwex.edu/Assets/pdfs/A3924-15.pdf>

Arpin

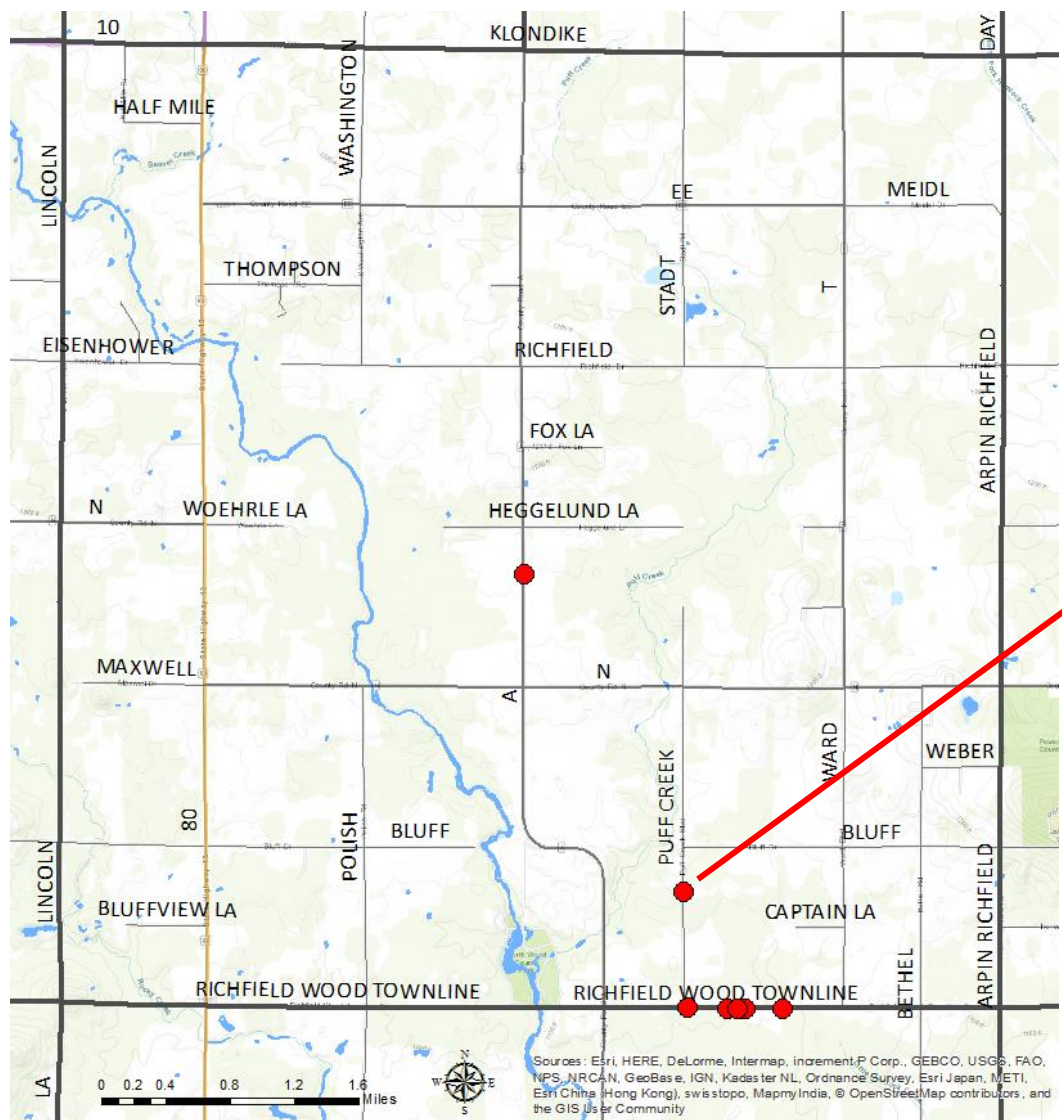


Between Beaver Ln & Arpin-Sherry Rd

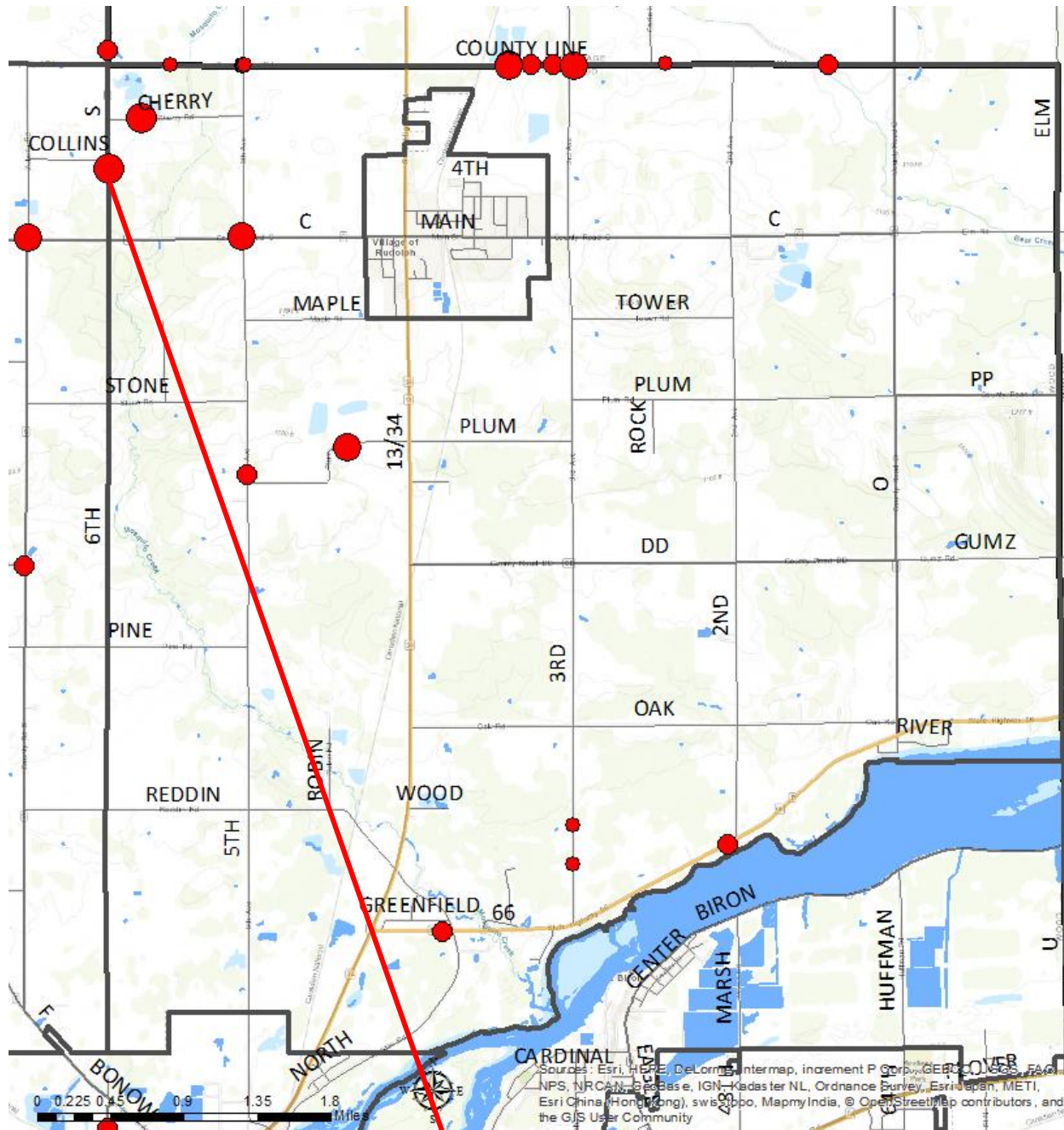
Grand Rapids



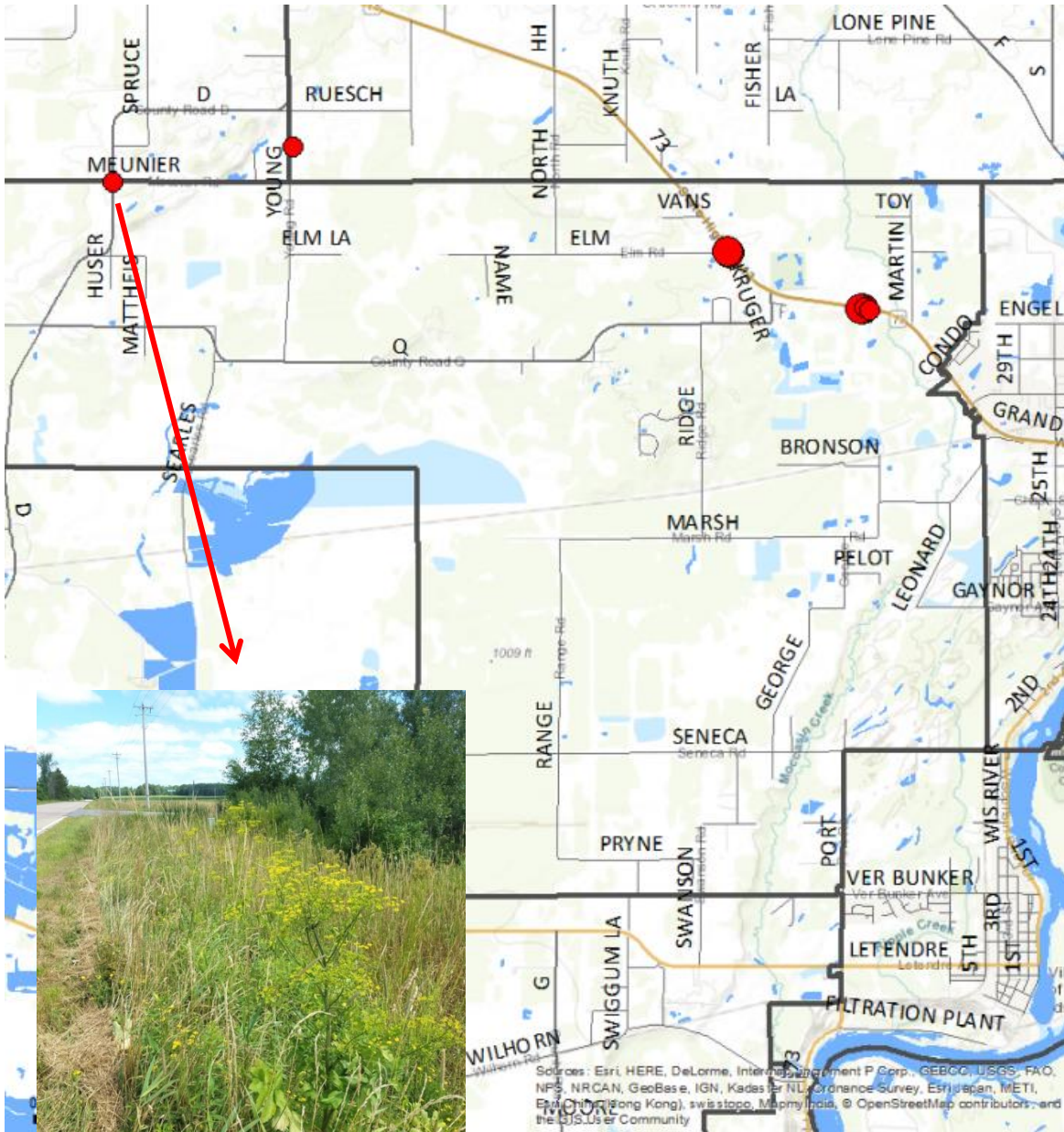
Richfield



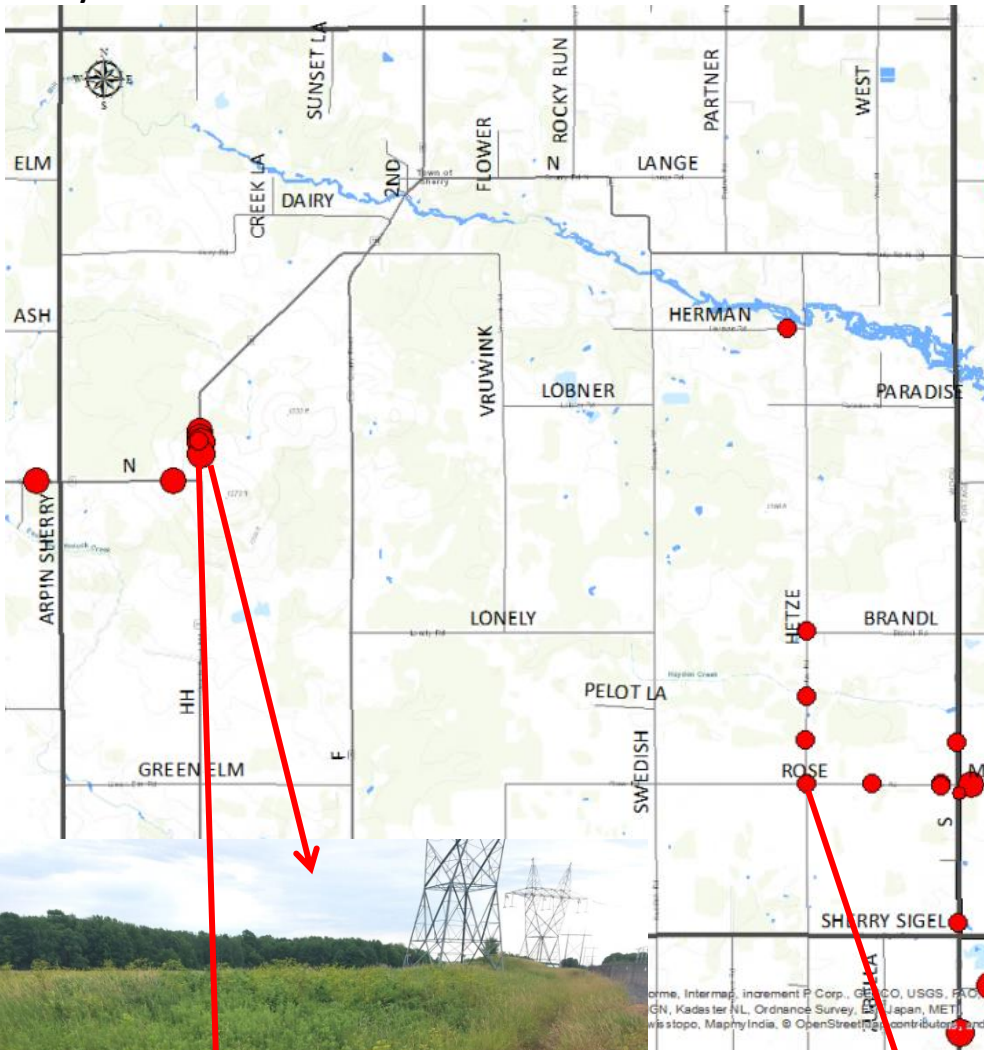
Rudolph



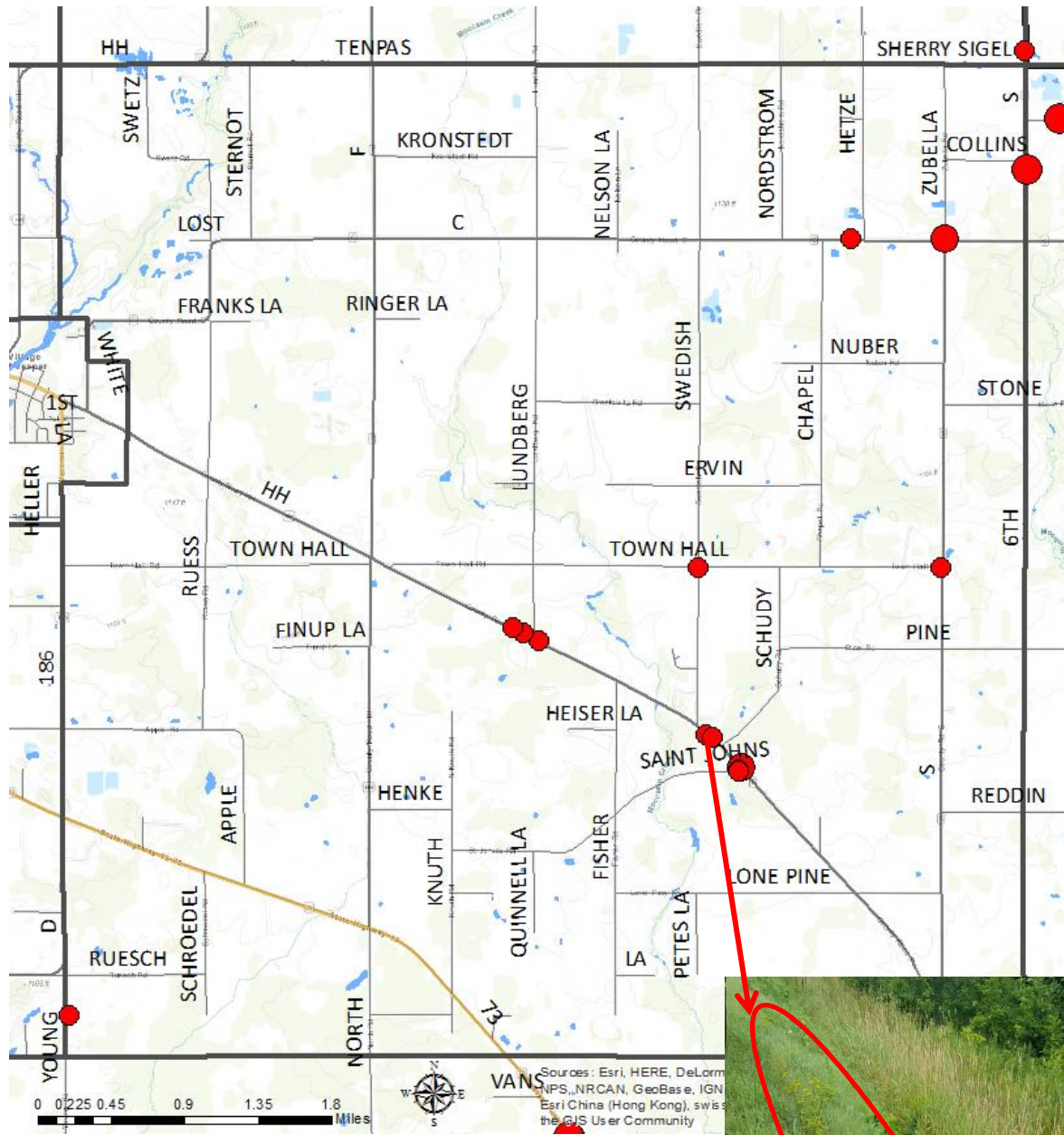
Seneca



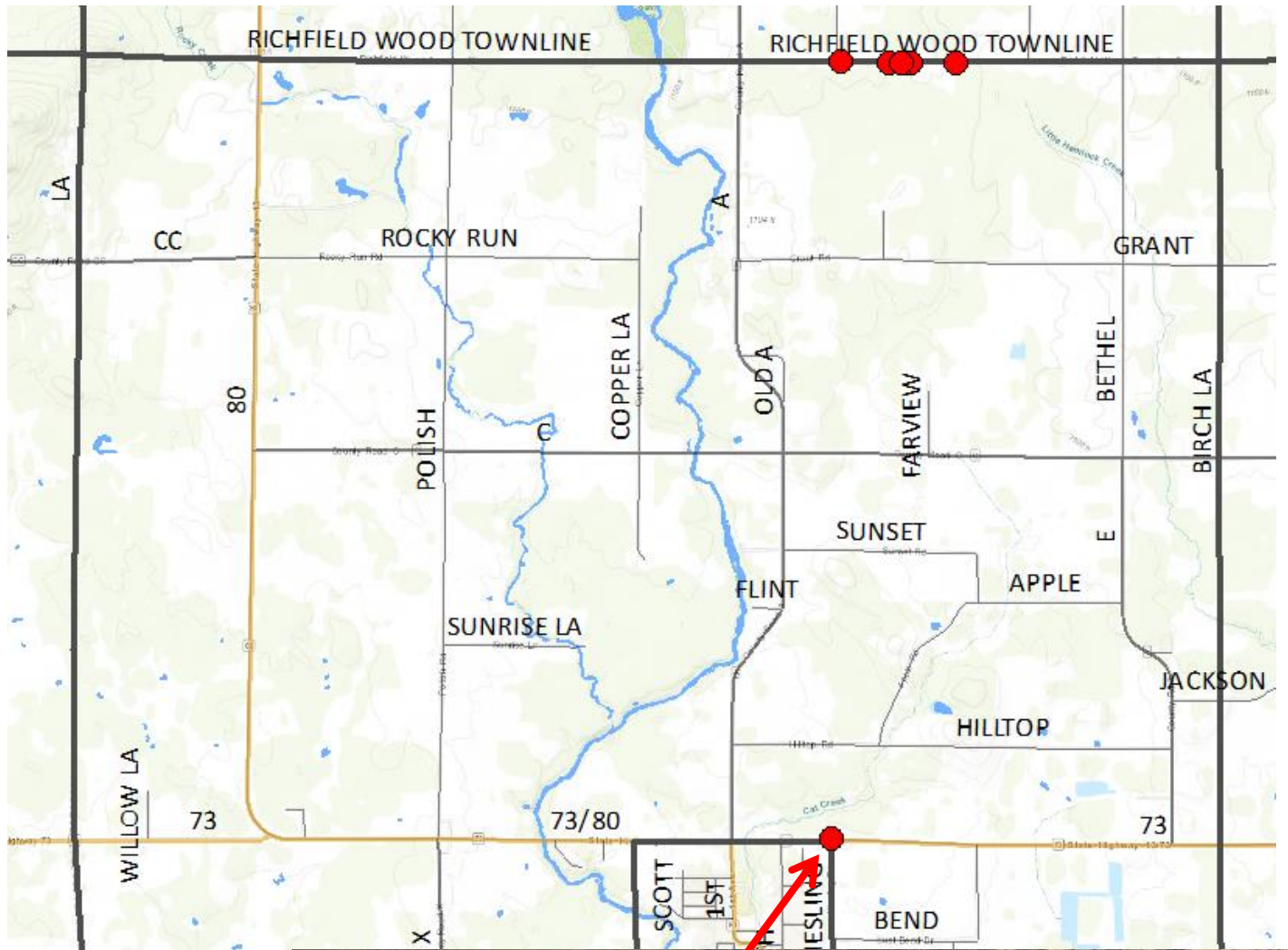
Sherry



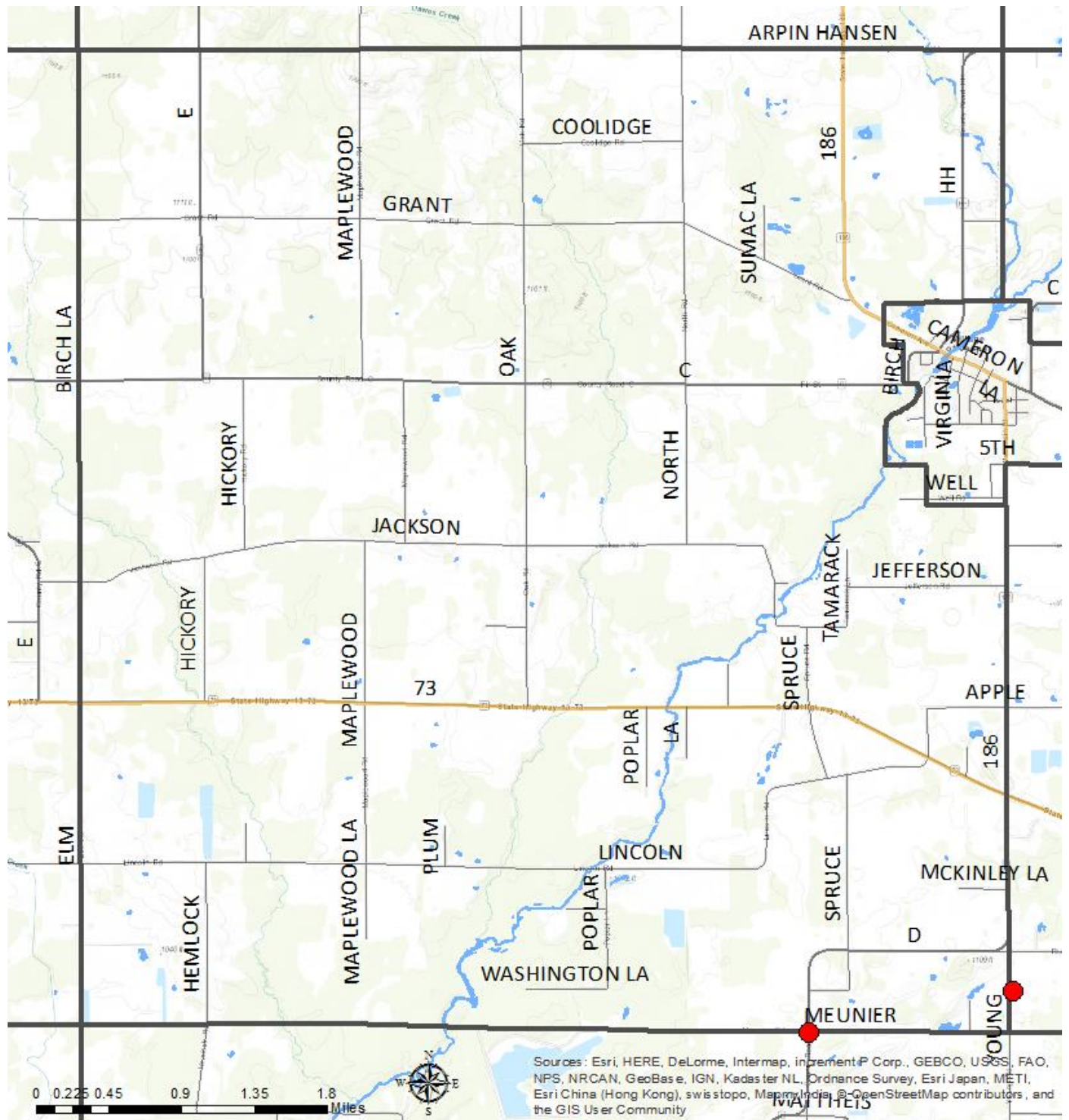
Sigel



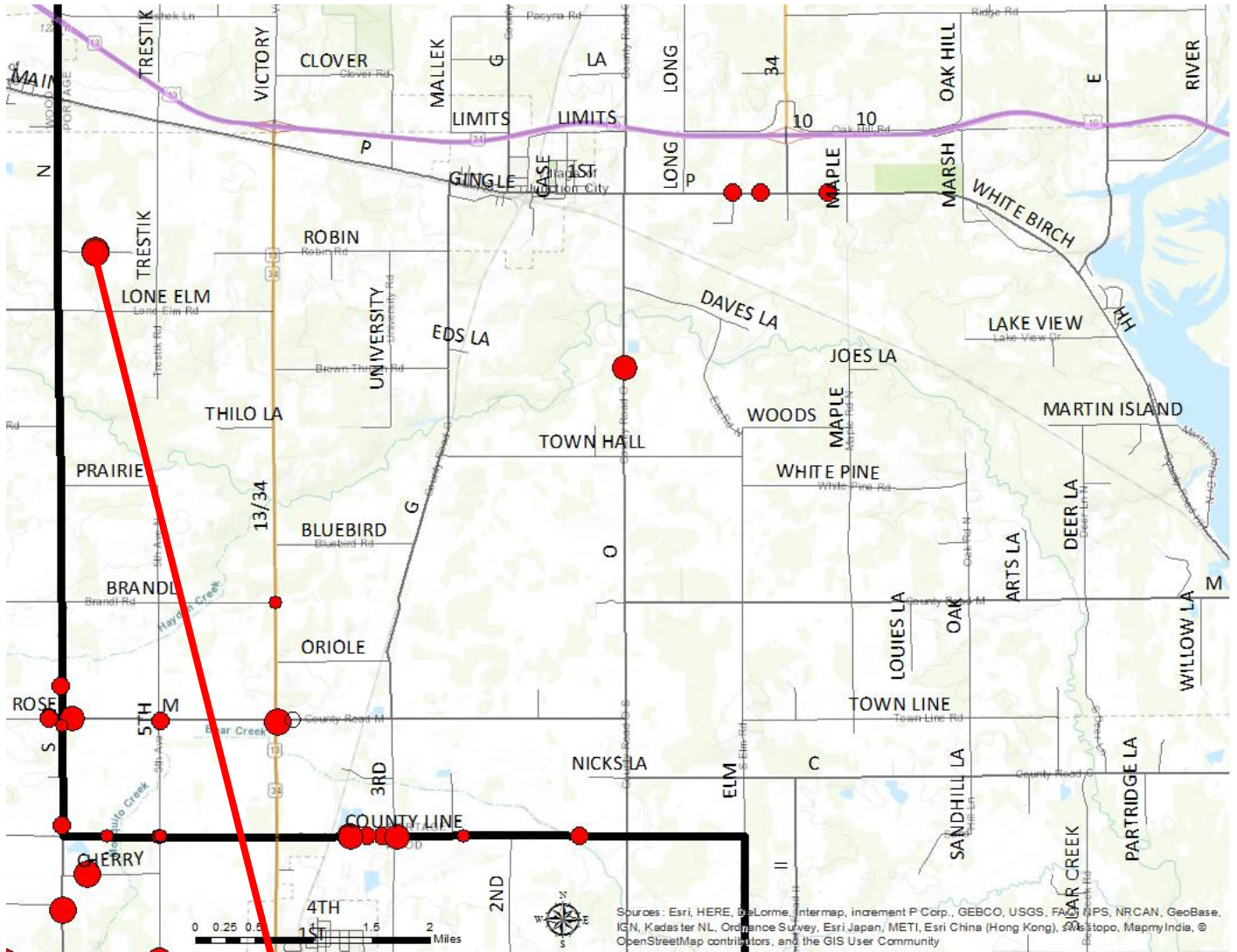
Wood



Hansen

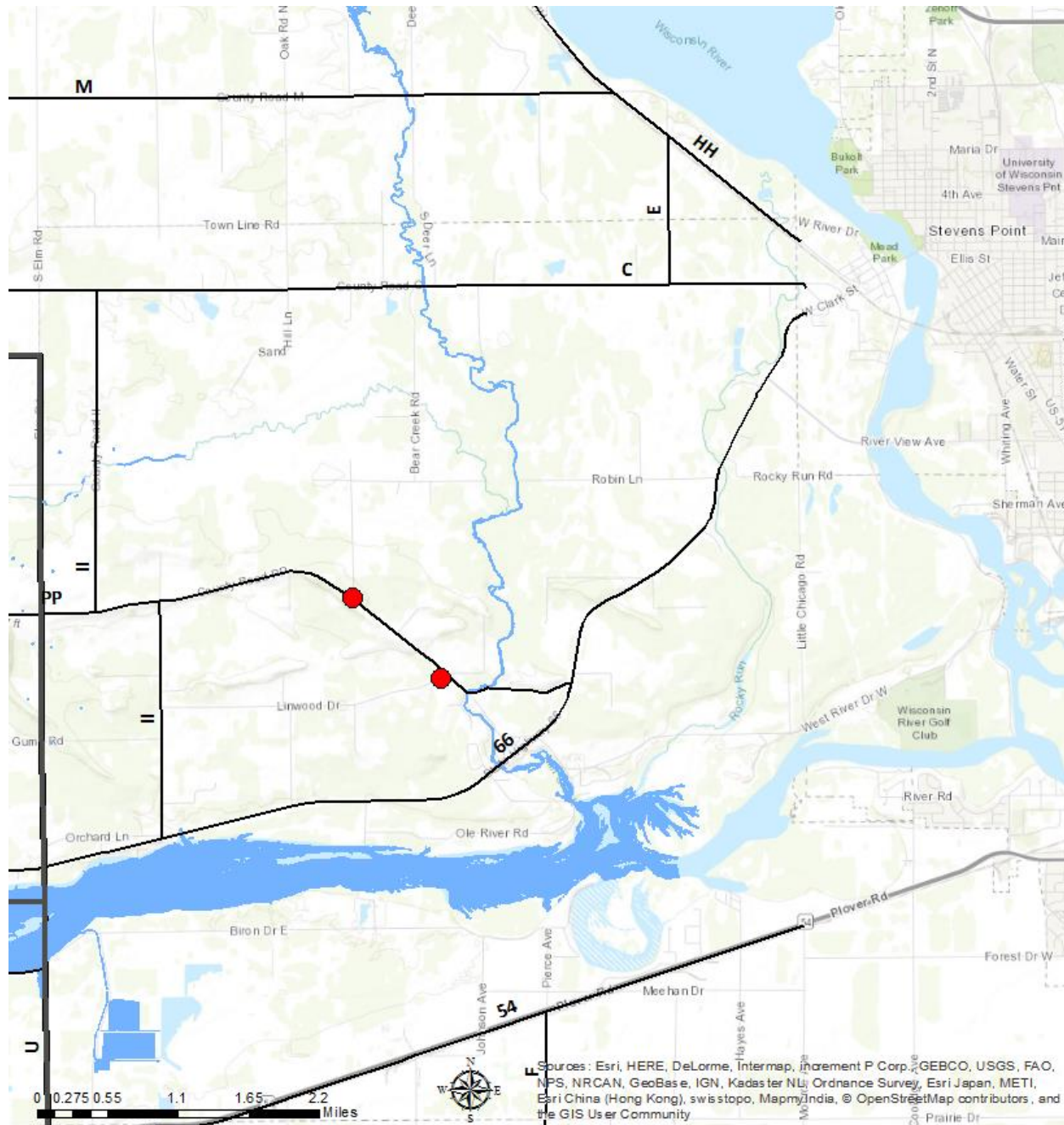


Carson



Wild parsnip runs up and down both sides of Harvey's Lane, shown in yellow

Linwood



Wild parsnip was spotted late in the season on the corner of PP and Bear Creek, and at the corner of Linwood Drive and PP